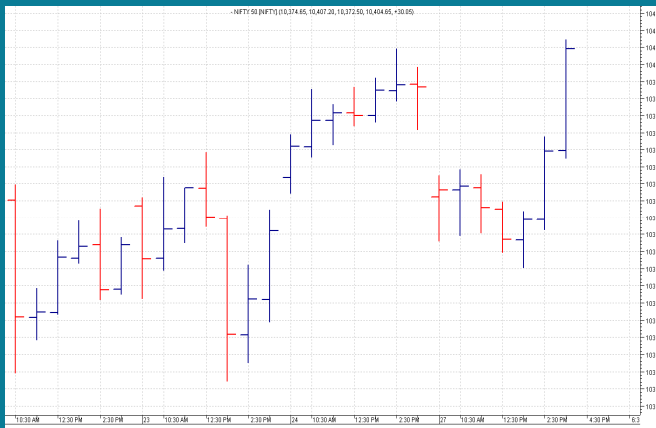


NIFTY: 10399 (+9)

BIAS POSITIVE


SGX NIFTY: 10396 (-21)

MARKET COMMENTRY

Nifty traded in red during first half yesterday. However, buying support during second half pulled it to 10407 and finally it settled with a gain of 9 points.

Except Metal and FMCG, all other sector and thematic indices closed in green yesterday. Among them, Media index, with a gain of 2.19%, outperformed all.

GENERAL TREND

| HOURLY | DAILY | WEEKLY |
|--------|-------|--------|
| UP | UP | UP |

DEMAND AND SUPPLY LEVELS

| INDEX | CLOSE | DEMAND LEVELS | SUPPLY LEVELS |
|------------|-------|---------------|---------------|
| NIFTY 50 | 10399 | 10370, 10340 | 10450, 10490 |
| NIFTY BANK | 25892 | 25850, 25700 | ----- |

SECTOR INDICES PERFORMANCE

| INDEX | CLOSE | % CHANGE |
|-------------------|-----------|----------|
| NIFTY MEDIA | 3,337.00 | 2.19 |
| NIFTY REALTY | 320.55 | 0.87 |
| NIFTY INFRA | 3,553.15 | 0.80 |
| NIFTY PSU BANK | 4,029.30 | 0.55 |
| NIFTY BANK | 25,891.95 | 0.44 |
| NIFTY PVT BANK | 14,219.95 | 0.42 |
| NIFTY FIN SERVICE | 10,544.20 | 0.37 |
| NIFTY ENERGY | 14,454.45 | 0.29 |
| NIFTY AUTO | 11,402.70 | 0.27 |
| NIFTY COMMODITIES | 3,993.95 | 0.26 |
| NIFTY SERV SECTOR | 13,702.85 | 0.24 |
| NIFTY CONSUMPTION | 4,851.50 | 0.17 |
| NIFTY IT | 11,314.25 | 0.07 |
| NIFTY CPSE | 2,642.75 | 0.06 |
| NIFTY PHARMA | 9,368.70 | 0.05 |
| NIFTY FMCG | 25,906.80 | -0.25 |
| NIFTY METAL | 3,739.75 | -0.69 |

COMMODITY

Except Aluminum, all other base metals witnessed selling yesterday and closed in deep red. Among Gold and Silver, Gold closed in green whereas Silver settled flat.

Crude prices also witnessed profit booking yesterday and Light Crude closed at \$58.11 with a loss of \$0.84.

DISCLAIMER: This Document has been prepared by Baljit Securities Pvt Ltd. (Baljit Securities). The information and opinions contained herein have been compiled or arrived at, based upon information obtained from reliable sources. Such information has not been independently verified and no guaranty, representation of warranty, express or implied, is made as to its accuracy, completeness or correctness. All such information and opinions are subject to change without notice. Baljit Securities, its directors, analysts or employees do not take any responsibility, financial or otherwise, of the losses or the damages sustained due to the investments made or any action taken on basis of this report. Baljit Securities expressly disclaims any and all liabilities that may arise from information, errors or omissions in this connection. This document is not to be considered as an offer to sell or a solicitation to buy any securities. Baljit Securities and its directors, associates, employees may or may not have any positions in any of the stocks dealt in the report. This report is only for **PRIVATE CIRCULATION**.

Trend Help Desk

Contact : 033 – 40511113 / 114
Email : trend@baljitgroup.com

