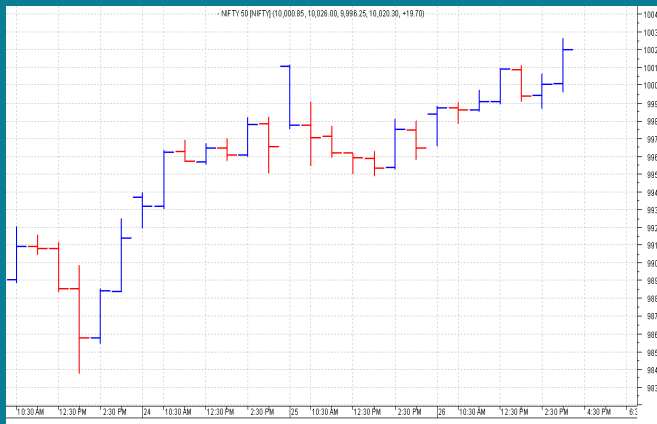


NIFTY: 10020 (+56)**CLOSE ABOVE 10000****SGX NIFTY: 10036 (+5)****MARKET COMMENTRY**

Continuing the upward journey, Nifty made new high of 10026 yesterday and closed above 10000 for the first time in history.

Most of the sector and thematic indices closed in green. Among them, Metal index outperformed with a gain of 1.73%, followed by Pharma with a percent gain. On the other hand, Media, PSU Bank and IT sector indices underperformed and settled in red.

GENERAL TREND

HOURLY	DAILY	WEEKLY
UP	UP	UP

DEMAND AND SUPPLY LEVELS

INDEX	CLOSE	DEMAND LEVELS	SUPPLY LEVELS
NIFTY 50	10020	9990, 9965	-----
NIFTY BANK	24670	24600, 24530	-----

SECTOR INDICES PERFORMANCE

INDEX	CLOSE	% CHANGE
NIFTY METAL	3,283.25	1.73
NIFTY PHARMA	10,036.80	1.07
NIFTY PVT BANK	13,777.85	0.84
NIFTY ENERGY	12,792.05	0.79
NIFTY FMCG	26,099.50	0.67
NIFTY AUTO	11,003.55	0.65
NIFTY BANK	24,670.70	0.61
NIFTY COMMODITIES	3,647.85	0.58
NIFTY REALTY	282.55	0.53
NIFTY INFRA	3,391.20	0.31
NIFTY SERV SECTOR	13,093.95	0.30
NIFTY FIN SERVICE	9,986.85	0.28
NIFTY CONSUMPTION	4,488.35	0.25
NIFTY CPSE	2,404.05	0.24
NIFTY IT	10,782.95	-0.25
NIFTY PSU BANK	3,573.00	-0.47
NIFTY MEDIA	3,089.35	-0.64

COMMODITY

Base metals traded mixed yesterday. Gold and Silver prices witnessed intraday volatility.

Rally continued in Crude and Light crude settled at \$48.75 with a gain of \$0.86.

DISCLAIMER: This Document has been prepared by Baljit Securities Pvt Ltd. (Baljit Securities). The information and opinions contained herein have been compiled or arrived at, based upon information obtained from reliable sources. Such information has not been independently verified and no guaranty, representation of warranty, express or implied, is made as to its accuracy, completeness or correctness. All such information and opinions are subject to change without notice. Baljit Securities, its directors, analysts or employees do not take any responsibility, financial or otherwise, of the losses or the damages sustained due to the investments made or any action taken on basis of this report. Baljit Securities expressly disclaims any and all liabilities that may arise from information, errors or omissions in this connection. This document is not to be considered as an offer to sell or a solicitation to buy any securities. Baljit Securities and its directors, associates, employees may or may not have any positions in any of the stocks dealt in the report. This report is only for **PRIVATE CIRCULATION**.

Trend Help Desk

Contact : 033 – 40511113 / 114
Email : trend@baljitgroup.com

