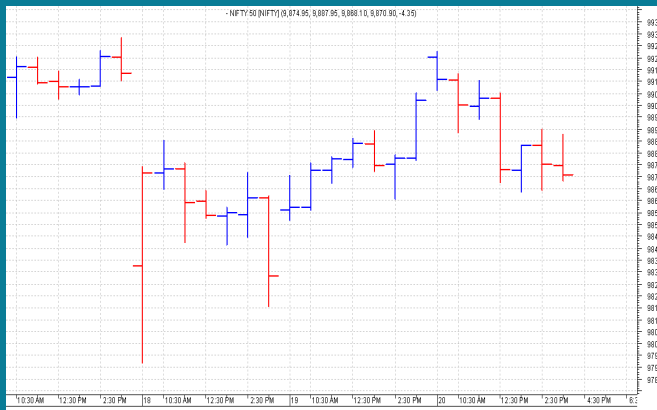


NIFTY: 9873 (-26)
RANGED WITH NEGATIVE BIAS

SGX NIFTY: 9897 (+1)
MARKET COMMENTRY

Nifty traded range bound with a negative bias yesterday. Although it made a high of 9922 during initial trade, the level could not be sustained and it felt down to 9863. Finally Nifty settled at 9873 with a loss of 26 points.

Most of sector and thematic indices closed in red yesterday among which PSU Bank index was the worst performer with 1.16% loss. On the other hand, Private sector index outperformed and settled 0.69% higher.

GENERAL TREND

| HOURLY | DAILY | WEEKLY |
|--------|-------|--------|
| DOWN | UP | UP |

DEMAND AND SUPPLY LEVELS

| INDEX | CLOSE | DEMAND LEVELS | SUPPLY LEVELS |
|------------|-------|---------------|---------------|
| NIFTY 50 | 9873 | 9860, 9850 | 9900, 9922 |
| NIFTY BANK | 24213 | 24180, 24140 | 24250, 24300 |

SECTOR INDICES PERFORMANCE

| INDEX | CLOSE | % CHANGE |
|-------------------|-----------|----------|
| NIFTY PSU BANK | 3,508.35 | -1.16 |
| NIFTY METAL | 3,196.40 | -0.92 |
| NIFTY PHARMA | 10,140.75 | -0.92 |
| NIFTY IT | 10,491.10 | -0.88 |
| NIFTY COMMODITIES | 3,599.80 | -0.79 |
| NIFTY FMCG | 25,762.95 | -0.59 |
| NIFTY MEDIA | 3,125.20 | -0.58 |
| NIFTY AUTO | 10,960.70 | -0.47 |
| NIFTY CONSUMPTION | 4,457.35 | -0.42 |
| NIFTY ENERGY | 12,445.80 | -0.35 |
| NIFTY INFRA | 3,374.65 | -0.15 |
| NIFTY SERV SECTOR | 12,888.20 | -0.03 |
| NIFTY BANK | 24,213.35 | 0.25 |
| NIFTY REALTY | 282.05 | 0.27 |
| NIFTY PVT BANK | 13,518.25 | 0.34 |
| NIFTY FIN SERVICE | 9,866.90 | 0.42 |
| NIFTY CPSE | 2,417.30 | 0.69 |

COMMODITY

Base metals traded range bound with a negative bias yesterday. On the other hand, Gold and Silver prices traded with a positive bias.

Crude prices remain firm but settled in red yesterday. Light crude made a high of \$47.74 but closed at \$46.92 with a net loss of \$0.40.

DISCLAIMER: This Document has been prepared by Baljit Securities Pvt Ltd. (Baljit Securities). The information and opinions contained herein have been compiled or arrived at, based upon information obtained from reliable sources. Such information has not been independently verified and no guaranty, representation of warranty, express or implied, is made as to its accuracy, completeness or correctness. All such information and opinions are subject to change without notice. Baljit Securities, its directors, analysts or employees do not take any responsibility, financial or otherwise, of the losses or the damages sustained due to the investments made or any action taken on basis of this report. Baljit Securities expressly disclaims any and all liabilities that may arise from information, errors or omissions in this connection. This document is not to be considered as an offer to sell or a solicitation to buy any securities. Baljit Securities and its directors, associates, employees may or may not have any positions in any of the stocks dealt in the report. This report is only for **PRIVATE CIRCULATION**.

Trend Help Desk

Contact : 033 – 40511113 / 114
Email : trend@baljitgroup.com

