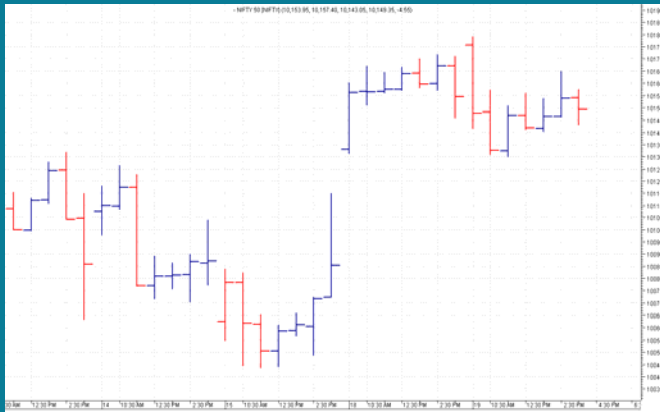


NIFTY: 10147 (-5)**SIDEWAYS AT NEW HIGH****SGX NIFTY: 10158 (-9)****MARKET COMMENTRY**

Nifty traded sideways yesterday and closed flat. It moved between a small range of 20 points between 10140 and 10160 for entire day and settled at 10147.

In line with broad indices, most of sector and thematic indices also traded range bound and settled flat yesterday. However, among them few out performed and few underperformed also. With a rise of 0.88%, Realty index was the top gainer whereas with a fall of 0.79%, PSU bank was top loser.

GENERAL TREND

HOURLY	DAILY	WEEKLY
SIDEWAYS	UP	UP

DEMAND AND SUPPLY LEVELS

INDEX	CLOSE	DEMAND LEVELS	SUPPLY LEVELS
NIFTY 50	10147	10140, 10130	10165, 10180
NIFTY BANK	25041	25000, 24950	25105, 25200

SECTOR INDICES PERFORMANCE

INDEX	CLOSE	% CHANGE
NIFTY REALTY	291.30	0.88
NIFTY PSE	4,167.60	0.76
NIFTY AUTO	11,170.75	0.59
NIFTY CPSE	2,545.95	0.57
NIFTY FMCG	25,648.40	0.27
NIFTY ENERGY	13,413.70	0.27
NIFTY PVT BANK	14,132.50	0.24
NIFTY MEDIA	3,162.35	0.22
NIFTY COMMODITIES	3,914.20	0.08
NIFTY IT	10,654.80	0.05
NIFTY BANK	25,041.55	-0.02
NIFTY SERV SECTOR	13,263.55	-0.03
NIFTY CONSUMPTION	4,597.80	-0.06
NIFTY INFRA	3,409.70	-0.06
NIFTY MID LIQ 15	4,062.00	-0.10
NIFTY MNC	13,719.85	-0.21
NIFTY100 LIQ 15	4,521.60	-0.23

COMMODITY

Base Metals traded mixed yesterday also. Nickel, Copper and Zinc closed flat whereas Aluminum and Lead witnessed rally and closed in green. Gold and Silver prices traded extremely range bound and settled flat. Crude prices traded with a negative bias and Light crude settled at \$49.90 with a net loss of \$0.45.

DISCLAIMER: This Document has been prepared by Baljit Securities Pvt Ltd. (Baljit Securities). The information and opinions contained herein have been compiled or arrived at, based upon information obtained from reliable sources. Such information has not been independently verified and no guaranty, representation of warranty, express or implied, is made as to its accuracy, completeness or correctness. All such information and opinions are subject to change without notice. Baljit Securities, its directors, analysts or employees do not take any responsibility, financial or otherwise, of the losses or the damages sustained due to the investments made or any action taken on basis of this report. Baljit Securities expressly disclaims any and all liabilities that may arise from information, errors or omissions in this connection. This document is not to be considered as an offer to sell or a solicitation to buy any securities. Baljit Securities and its directors, associates, employees may or may not have any positions in any of the stocks dealt in the report. This report is only for **PRIVATE CIRCULATION**.

Trend Help Desk

Contact : 033 – 40511113 / 114

Email : trend@baljitgroup.com

