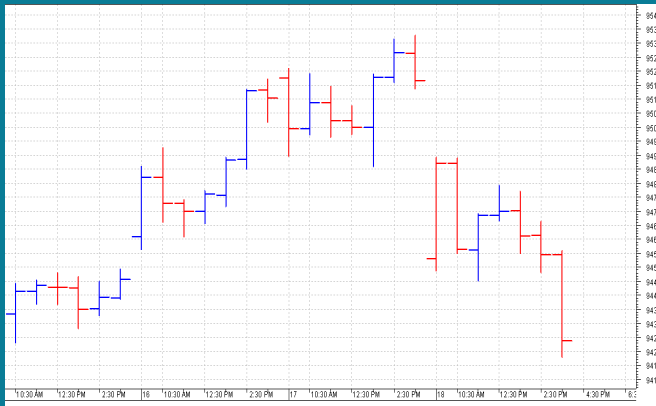


NIFTY: 9429 (-96)**GLOBAL SELL OFF****SGX NIFTY: 9454 (+20)****MARKET COMMENTRY**

Market witnessed sell off yesterday. Backed by global cues, Nifty opened with a downside gap and plunged to 9418. It settled at 9429 with a huge loss of 96 points.

Except IT index, all other sector and thematic indices closed in red yesterday. With a loss of 3.27%, Realty sector index was the worst hit. Metal, Auto and PSU Bank indices also lost more than 2%. IT sector index was the only one which closed in green with a percent gain.

GENERAL TREND

| HOURLY | DAILY | WEEKLY |
|--------|-------|--------|
| DOWN | UP | UP |

DEMAND AND SUPPLY LEVELS

| INDEX | CLOSE | DEMAND LEVELS | SUPPLY LEVELS |
|------------|-------|---------------|---------------|
| NIFTY 50 | 9429 | 9410, 9375 | 9450, 9480 |
| NIFTY BANK | 22698 | 22580, 22500 | 22730, 22800 |

SECTOR INDICES PERFORMANCE

| INDEX | CLOSE | % CHANGE |
|-------------------|-----------|----------|
| NIFTY REALTY | 264.70 | -3.27 |
| NIFTY METAL | 2,947.05 | -2.76 |
| NIFTY COMMODITIES | 3,524.10 | -2.20 |
| NIFTY AUTO | 10,436.35 | -2.19 |
| NIFTY PSU BANK | 3,737.80 | -2.10 |
| NIFTY INFRA | 3,243.75 | -1.83 |
| NIFTY CONSUMPTION | 4,198.75 | -1.75 |
| NIFTY FMCG | 23,864.00 | -1.66 |
| NIFTY MEDIA | 3,166.60 | -1.66 |
| NIFTY ENERGY | 11,884.40 | -1.56 |
| NIFTY CPSE | 2,675.15 | -1.25 |
| NIFTY PVT BANK | 12,485.90 | -1.07 |
| NIFTY BANK | 22,698.60 | -1.03 |
| NIFTY FIN SERVICE | 9,259.25 | -0.91 |
| NIFTY PHARMA | 10,160.30 | -0.61 |
| NIFTY SERV SECTOR | 12,257.90 | -0.50 |
| NIFTY IT | 10,545.60 | 1.04 |

COMMODITY MARKET

Aluminum, Copper and Nickel witnessed rally yesterday. Lead and Zinc also recovered from lows.

Rally continued in Gold but Silver prices witnessed profit booking yesterday. In fact, gold price in domestic market jumped to 29000 level.

DISCLAIMER: This Document has been prepared by Baljit Securities Pvt Ltd. (Baljit Securities). The information and opinions contained herein have been compiled or arrived at, based upon information obtained from reliable sources. Such information has not been independently verified and no guaranty, representation of warranty, express or implied, is made as to its accuracy, completeness or correctness. All such information and opinions are subject to change without notice. Baljit Securities, its directors, analysts or employees do not take any responsibility, financial or otherwise, of the losses or the damages sustained due to the investments made or any action taken on basis of this report. Baljit Securities expressly disclaims any and all liabilities that may arise from information, errors or omissions in this connection. This document is not to be considered as an offer to sell or a solicitation to buy any securities. Baljit Securities and its directors, associates, employees may or may not have any positions in any of the stocks dealt in the report. This report is only for **PRIVATE CIRCULATION**.

Trend Help Desk

Contact : 033 – 40511113 / 114
Email : trend@baljitgroup.com

