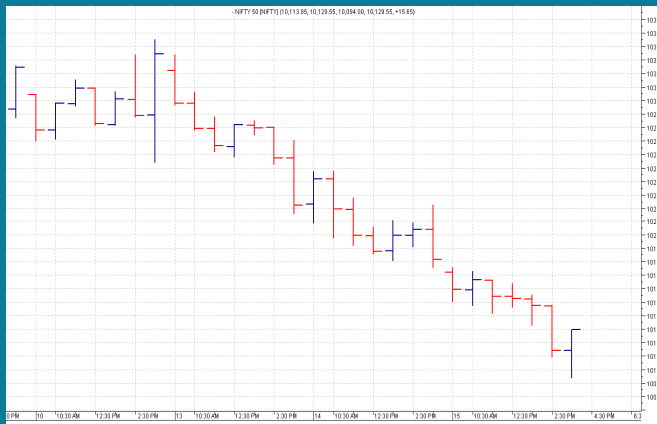


NIFTY: 10118 (-68)

DOWNWARD JOURNEY


SGX NIFTY: 10166 (+20)

MARKET COMMENTRY

Continuing the down ward journey, Nifty felt down 92 points to 10094. It was an opening in red followed by sustained down ward move till end. Finally Nifty settled at 10118 with a net loss of 68 points.

Needless to say, all sector and thematic indices also closed in red yesterday and with a loss of 2.96%, Metal index was the worst hit. It was followed by Pharma with 1.99% loss. Only Private Bank index managed to settle flat.

GENERAL TREND

HOURLY	DAILY	WEEKLY
DOWN	DOWN	UP

DEMAND AND SUPPLY LEVELS

INDEX	CLOSE	DEMAND LEVELS	SUPPLY LEVELS
NIFTY 50	10118	10094, 10050	10155, 10175
NIFTY BANK	25219	25166, 25120	25320, 25400

SECTOR INDICES PERFORMANCE

INDEX	CLOSE	% CHANGE
NIFTY METAL	3,660.95	-2.96
NIFTY PHARMA	9,025.20	-1.99
NIFTY REALTY	298.05	-1.80
NIFTY INFRA	3,445.30	-1.25
NIFTY COMMODITIES	3,880.40	-1.24
NIFTY FMCG	25,273.75	-1.20
NIFTY PSU BANK	3,904.55	-1.13
NIFTY CPSE	2,579.15	-1.11
NIFTY MEDIA	3,125.25	-1.08
NIFTY CONSUMPTION	4,710.25	-0.74
NIFTY SERV SECTOR	13,323.05	-0.52
NIFTY AUTO	11,103.60	-0.48
NIFTY ENERGY	13,676.00	-0.45
NIFTY IT	11,122.85	-0.41
NIFTY FIN SERVICE	10,251.50	-0.40
NIFTY BANK	25,218.90	-0.26
NIFTY PVT BANK	13,873.10	-0.12

COMMODITY

Base metal prices remain under pressure yesterday also. Gold and Silver prices also settled with a negative bias.

Correction continued in Crude prices yesterday also and they and settled in red.

DISCLAIMER: This Document has been prepared by Baljit Securities Pvt Ltd. (Baljit Securities). The information and opinions contained herein have been compiled or arrived at, based upon information obtained from reliable sources. Such information has not been independently verified and no guaranty, representation of warranty, express or implied, is made as to its accuracy, completeness or correctness. All such information and opinions are subject to change without notice. Baljit Securities, its directors, analysts or employees do not take any responsibility, financial or otherwise, of the losses or the damages sustained due to the investments made or any action taken on basis of this report. Baljit Securities expressly disclaims any and all liabilities that may arise from information, errors or omissions in this connection. This document is not to be considered as an offer to sell or a solicitation to buy any securities. Baljit Securities and its directors, associates, employees may or may not have any positions in any of the stocks dealt in the report. This report is only for **PRIVATE CIRCULATION**.

Trend Help Desk

Contact : 033 – 40511113 / 114
Email : trend@baljitgroup.com

