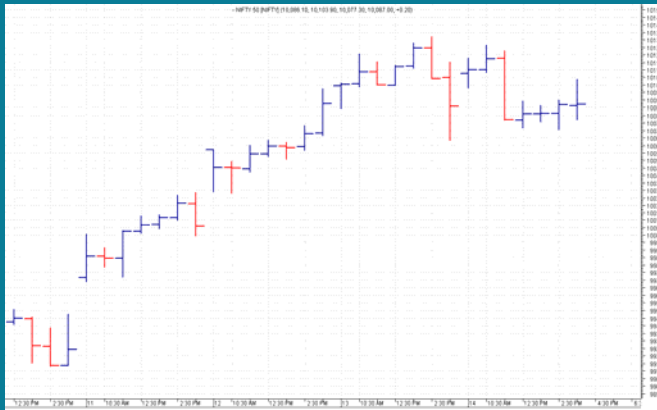


NIFTY: 10086 (+7)**RANGE BOUND****SGX NIFTY: 10059 (-65)****MARKET COMMENTRY**

Nifty traded range bound yesterday and settled flat. It made a high of 10126 and low of 10070 before settling at 10086.

Sector and thematic indices traded mixed yesterday also. Few closed in green, few in red and few settled flat. With a loss of 0.6%, CPSE index underperformed whereas with a gain of 2.63%, Pharma outperformed. In fact Pharma index has outperformed others for third consecutive session.

GENERAL TREND

HOURLY	DAILY	WEEKLY
SIDEWAYS	UP	UP

DEMAND AND SUPPLY LEVELS

INDEX	CLOSE	DEMAND LEVELS	SUPPLY LEVELS
NIFTY 50	10086	10070, 10063	10100, 10125
NIFTY BANK	24912	24870, 24815	24948, 24995

SECTOR INDICES PERFORMANCE

INDEX	CLOSE	% CHANGE
NIFTY PHARMA	9,380.85	2.63
NIFTY PSU BANK	3,294.70	0.69
NIFTY PVT BANK	14,002.45	0.37
NIFTY BANK	24,912.25	0.32
NIFTY AUTO	10,949.00	0.30
NIFTY MEDIA	3,089.70	0.22
NIFTY FIN SERVICE	10,257.95	0.12
NIFTY SERV SECTOR	13,187.25	0.12
NIFTY INFRA	3,386.10	0.11
NIFTY FMCG	25,628.25	-0.02
NIFTY IT	10,496.05	-0.09
NIFTY COMMODITIES	3,897.75	-0.20
NIFTY CONSUMPTION	4,550.95	-0.33
NIFTY ENERGY	13,364.60	-0.37
NIFTY REALTY	287.70	-0.52
NIFTY METAL	3,650.40	-0.57
NIFTY CPSE	2,499.45	-0.60

COMMODITY

Except Lead, all other base metals witnessed selling and closed in red yesterday also. On the other hand Gold and Silver prices remain stable and settled flat.

Rally continued in crude yesterday also and light crude made a high of \$50.50 before closing at \$ 49.89 with a net gain of \$0.59.

DISCLAIMER: This Document has been prepared by Baljit Securities Pvt Ltd. (Baljit Securities). The information and opinions contained herein have been compiled or arrived at, based upon information obtained from reliable sources. Such information has not been independently verified and no guaranty, representation of warranty, express or implied, is made as to its accuracy, completeness or correctness. All such information and opinions are subject to change without notice. Baljit Securities, its directors, analysts or employees do not take any responsibility, financial or otherwise, of the losses or the damages sustained due to the investments made or any action taken on basis of this report. Baljit Securities expressly disclaims any and all liabilities that may arise from information, errors or omissions in this connection. This document is not to be considered as an offer to sell or a solicitation to buy any securities. Baljit Securities and its directors, associates, employees may or may not have any positions in any of the stocks dealt in the report. This report is only for **PRIVATE CIRCULATION**.

Trend Help Desk

Contact : 033 – 40511113 / 114

Email : trend@baljitgroup.com

