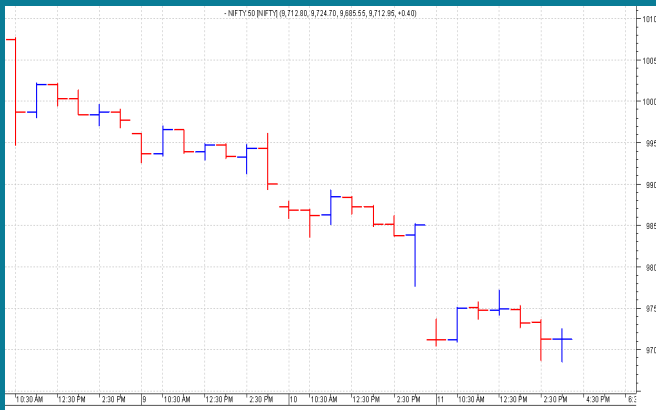


NIFTY: 9711 (-109)

BIGGEST WEEKLY LOSS


SGX NIFTY: 9781 (+54)

MARKET COMMENTRY

Nifty witnessed it's biggest weekly loss of the year. It closed with a huge erosion of 355 points last week by falling every session of the week.

Needless to say, all sector and thematic indices also closed in deep red last week. On Friday, PSU bank index with the top loser by a loss of 4.85%. It was seconded b Metal with 3.37% loss. On the other hand, Pharma and IT indices out performed and settled flat.

GENERAL TREND

| HOURLY | DAILY | WEEKLY |
|-------------|-------------|-------------|
| DOWN | DOWN | DOWN |

DEMAND AND SUPPLY LEVELS

| INDEX | CLOSE | DEMAND LEVELS | SUPPLY LEVELS |
|-------------------|--------------|---------------------|---------------------|
| NIFTY 50 | 9711 | 9685, 9650 | 9775, 9800 |
| NIFTY BANK | 23985 | 23868, 23822 | 24190, 24325 |

SECTOR INDICES PERFORMANCE

| INDEX | CLOSE | % CHANGE |
|-------------------|-----------|----------|
| NIFTY BANK | 23,985.75 | -0.96 |
| NIFTY AUTO | 10,457.75 | -1.40 |
| NIFTY FIN SERVICE | 9,837.35 | -0.86 |
| NIFTY FMCG | 24,762.55 | -0.83 |
| NIFTY IT | 10,647.05 | -0.14 |
| NIFTY MEDIA | 2,872.80 | -1.29 |
| NIFTY METAL | 3,216.60 | -3.37 |
| NIFTY PHARMA | 8,521.35 | 0.10 |
| NIFTY PSU BANK | 3,293.35 | -4.85 |
| NIFTY PVT BANK | 13,400.50 | -0.27 |
| NIFTY REALTY | 254.90 | -0.93 |
| NIFTY COMMODITIES | 3,621.15 | -1.56 |
| NIFTY CONSUMPTION | 4,375.60 | -1.28 |
| NIFTY CPSE | 2,365.70 | -0.71 |
| NIFTY ENERGY | 12,659.10 | -1.14 |
| NIFTY INFRA | 3,257.20 | -1.00 |
| NIFTY SERV SECTOR | 12,888.90 | -0.59 |

COMMODITY

Base metals witnessed smart rally last week and except Lead, all of them settled in green. Precious metals also witnessed smart rally last week and both Gold and Silver closed in green.

Crude prices traded range bound with a negative bias last week and settled almost flat.

DISCLAIMER: This Document has been prepared by Baljit Securities Pvt Ltd. (Baljit Securities). The information and opinions contained herein have been compiled or arrived at, based upon information obtained from reliable sources. Such information has not been independently verified and no guaranty, representation of warranty, express or implied, is made as to its accuracy, completeness or correctness. All such information and opinions are subject to change without notice. Baljit Securities, its directors, analysts or employees do not take any responsibility, financial or otherwise, of the losses or the damages sustained due to the investments made or any action taken on basis of this report. Baljit Securities expressly disclaims any and all liabilities that may arise from information, errors or omissions in this connection. This document is not to be considered as an offer to sell or a solicitation to buy any securities. Baljit Securities and its directors, associates, employees may or may not have any positions in any of the stocks dealt in the report. This report is only for **PRIVATE CIRCULATION**.

Trend Help Desk

Contact : 033 – 40511113 / 114
Email : trend@baljitgroup.com

