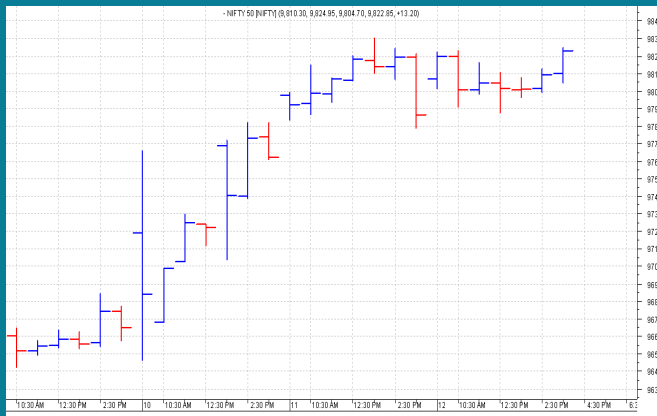


**NIFTY: 9816 (+30)**
**CLOSE ABOVE 9800**

**SGX NIFTY: 9879 (+43)**
**MARKET COMMENTRY**

Nifty traded range bound with positive bias yesterday. It rallied to 9825 during last hour of trade and settled at 9816 with a net gain of 30 points. This is the first close above the level of 9800.

Except IT index, all other sector and thematic indices closed in green yesterday. PSU Bank index, with a gain of 1.34% out performed and was seconded by Energy index with 1.3% and Commodity index with 1.03% gain

**GENERAL TREND**

HOURLY	DAILY	WEEKLY
UP	UP	UP

**DEMAND AND SUPPLY LEVELS**

INDEX	CLOSE	DEMAND LEVELS	SUPPLY LEVELS
<b>NIFTY 50</b>	<b>9816</b>	<b>9800, 9787</b>	<b>9830</b>
<b>NIFTY BANK</b>	<b>23695</b>	<b>23640, 23580</b>	<b>23750, 23960</b>

### SECTOR INDICES PERFORMANCE

INDEX	CLOSE	% CHANGE
NIFTY PSU BANK	3,477.10	1.34
NIFTY ENERGY	12,318.00	1.30
NIFTY COMMODITIES	3,577.15	1.03
NIFTY CPSE	2,412.65	0.99
NIFTY MEDIA	3,044.85	0.65
NIFTY INFRA	3,305.45	0.54
NIFTY BANK	23,695.45	0.47
NIFTY PVT BANK	13,193.60	0.40
NIFTY FIN SERVICE	9,643.10	0.39
NIFTY METAL	3,126.55	0.38
NIFTY AUTO	10,904.35	0.26
NIFTY SERV SECTOR	12,645.95	0.26
NIFTY CONSUMPTION	4,452.60	0.25
NIFTY FMCG	27,425.85	0.23
NIFTY PHARMA	9,817.80	0.16
NIFTY REALTY	277.65	0.16
NIFTY IT	10,401.50	-0.27

### COMMODITY

Base metals traded mixed yesterday. Precious metal prices traded range bound and closed flat.

Crude prices remain firm and settled in green yesterday also.

**DISCLAIMER:** This Document has been prepared by Baljit Securities Pvt Ltd. (Baljit Securities). The information and opinions contained herein have been compiled or arrived at, based upon information obtained from reliable sources. Such information has not been independently verified and no guaranty, representation of warranty, express or implied, is made as to its accuracy, completeness or correctness. All such information and opinions are subject to change without notice. Baljit Securities, its directors, analysts or employees do not take any responsibility, financial or otherwise, of the losses or the damages sustained due to the investments made or any action taken on basis of this report. Baljit Securities expressly disclaims any and all liabilities that may arise from information, errors or omissions in this connection. This document is not to be considered as an offer to sell or a solicitation to buy any securities. Baljit Securities and its directors, associates, employees may or may not have any positions in any of the stocks dealt in the report. This report is only for **PRIVATE CIRCULATION**.

#### Trend Help Desk

Contact : 033 – 40511113 / 114  
Email : trend@baljitgroup.com

