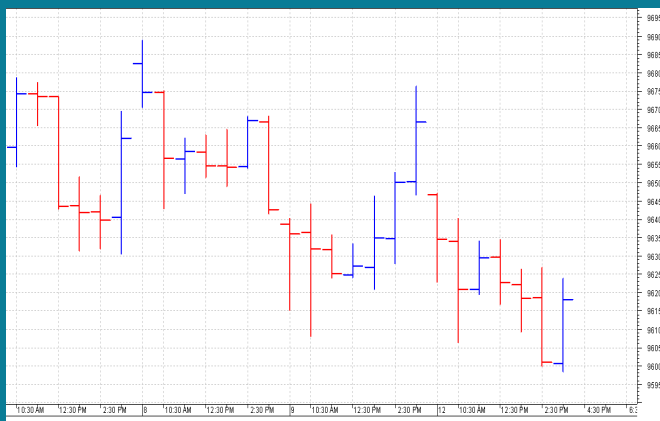


NIFTY: 9616 (-52)**CORRECTION TO 9600****SGX NIFTY: 9645 (+20)****MARKET COMMENTRY**

Nifty traded with negative bias yesterday and settled with a loss of 52 points. It made a low of 9598 before closing at 9616.

Most of Sector and thematic indices also closed in red yesterday among which Bank sector indices were worst hit.

With a fall of 1.96%, PSU Bank index underperformed all and was followed by Private sector index with a percentage loss.

On the other hand, IT and Pharma indices out performed and settled in green.

GENERAL TREND

HOURLY	DAILY	WEEKLY
DOWN	DOWN	UP

DEMAND AND SUPPLY LEVELS

INDEX	CLOSE	DEMAND LEVELS	SUPPLY LEVELS
NIFTY 50	9616	9590, 9580	9635, 9650
NIFTY BANK	23470	23425, 23385	23545, 23585

SECTOR INDICES PERFORMANCE

INDEX	CLOSE	% CHANGE
NIFTY PSU BANK	3,449.95	-1.96
NIFTY PVT BANK	13,056.75	-1.00
NIFTY INFRA	3,205.85	-0.95
NIFTY BANK	23,470.45	-0.93
NIFTY AUTO	10,963.85	-0.76
NIFTY FIN SERVICE	9,607.95	-0.58
NIFTY MEDIA	3,079.20	-0.53
NIFTY CONSUMPTION	4,357.60	-0.48
NIFTY ENERGY	11,633.75	-0.47
NIFTY COMMODITIES	3,468.10	-0.42
NIFTY SERV SECTOR	12,559.10	-0.39
NIFTY METAL	2,986.95	-0.36
NIFTY FMCG	25,864.85	-0.30
NIFTY REALTY	259.05	-0.23
NIFTY CPSE	2,497.20	0.14
NIFTY IT	10,470.75	0.27
NIFTY PHARMA	9,583.85	0.80

COMMODITY MARKET

Base metal prices remains under pressure and closed in red yesterday. Precious metals also witnessed pressure. In fact, Silver closed at 3 weeks low.

Crude prices traded range bound with positive bias yesterday. Light crude rallied to \$46.71 and settled at \$46.08 with a net gain of \$0.25.

DISCLAIMER: This Document has been prepared by Baljit Securities Pvt Ltd. (Baljit Securities). The information and opinions contained herein have been compiled or arrived at, based upon information obtained from reliable sources. Such information has not been independently verified and no guaranty, representation of warranty, express or implied, is made as to its accuracy, completeness or correctness. All such information and opinions are subject to change without notice. Baljit Securities, its directors, analysts or employees do not take any responsibility, financial or otherwise, of the losses or the damages sustained due to the investments made or any action taken on basis of this report. Baljit Securities expressly disclaims any and all liabilities that may arise from information, errors or omissions in this connection. This document is not to be considered as an offer to sell or a solicitation to buy any securities. Baljit Securities and its directors, associates, employees may or may not have any positions in any of the stocks dealt in the report. This report is only for **PRIVATE CIRCULATION**.

Trend Help Desk

Contact : 033 – 40511113 / 114
Email : trend@baljitgroup.com

