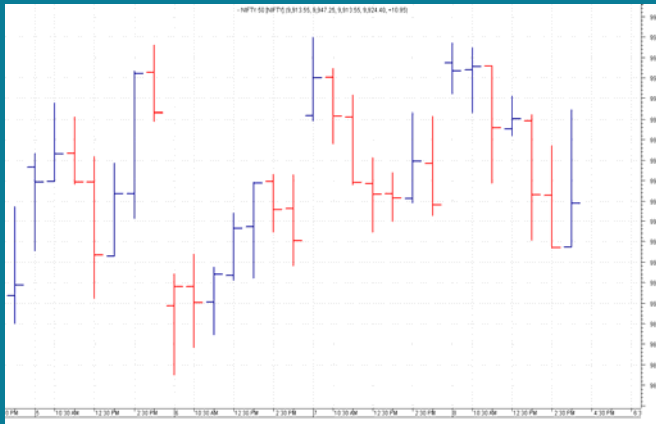


NIFTY: 9935 (+5)**RANGE BOUND WEEK****SGX NIFTY: 9995 (+48)****MARKET COMMENTRY**

Nifty traded range bound on Friday and settled flat. In fact, the entire week went in a range bound move and Nifty has a weekly change of 40 points only.

On Friday, sector and thematic indices traded mixed. Few closed in green, few in red and few settled flat. Among gainers, Infra index outperformed with 0.88% gain whereas Realty index under performed with 1.47% loss.

GENERAL TREND

HOURLY	DAILY	WEEKLY
SIDEWAYS	SIDEWAYS	SIDEWAYS

DEMAND AND SUPPLY LEVELS

INDEX	CLOSE	DEMAND LEVELS	SUPPLY LEVELS
NIFTY 50	9935	9913, 9905	9955, 9965
NIFTY BANK	24371	24300, 24250	24400, 24420

SECTOR INDICES PERFORMANCE

INDEX	CLOSE	% CHANGE
NIFTY REALTY	285.15	-1.47
NIFTY PHARMA	8,840.30	-1.21
NIFTY PSU BANK	3,220.10	-1.03
NIFTY ENERGY	13,152.70	-0.66
NIFTY MEDIA	3,039.75	-0.63
NIFTY AUTO	10,779.00	-0.54
NIFTY CPSE	2,488.10	-0.33
NIFTY COMMODITIES	3,879.75	-0.27
NIFTY CONSUMPTION	4,501.10	-0.23
NIFTY SERV SECTOR	13,016.65	-0.10
NIFTY IT	10,456.65	-0.04
NIFTY FIN SERVICE	10,121.00	0.11
NIFTY METAL	3,652.95	0.18
NIFTY BANK	24,370.80	0.27
NIFTY PVT BANK	13,712.15	0.28
NIFTY FMCG	25,408.85	0.39
NIFTY INFRA	3,307.20	0.88

COMMODITY

Base metals witnessed a correction last week and settled in red. On the other hand, rally continues in Gold and Silver and both closed in green last week also.

After an intraweek rally, Crude prices settled flat last week.

DISCLAIMER: This Document has been prepared by Baljit Securities Pvt Ltd. (Baljit Securities). The information and opinions contained herein have been compiled or arrived at, based upon information obtained from reliable sources. Such information has not been independently verified and no guaranty, representation of warranty, express or implied, is made as to its accuracy, completeness or correctness. All such information and opinions are subject to change without notice. Baljit Securities, its directors, analysts or employees do not take any responsibility, financial or otherwise, of the losses or the damages sustained due to the investments made or any action taken on basis of this report. Baljit Securities expressly disclaims any and all liabilities that may arise from information, errors or omissions in this connection. This document is not to be considered as an offer to sell or a solicitation to buy any securities. Baljit Securities and its directors, associates, employees may or may not have any positions in any of the stocks dealt in the report. This report is only for **PRIVATE CIRCULATION**.

Trend Help Desk

Contact : 033 – 40511113 / 114

Email : trend@baljitgroup.com

