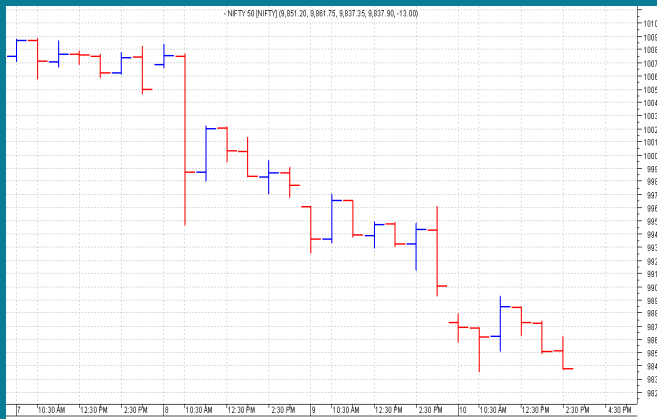


NIFTY: 9820 (-88)

CRASH TO 9976


SGX NIFTY: 9758 (-106)

MARKET COMMENTRY

Nifty felt down for third consecutive session yesterday. It crash down 132 points to 9776 and closed at 9908 with a net loss of 88 points. With this the index has lost 312 points from the high of 10088 within 3 trading sessions.

Needless to say, all sector and thematic indices closed in red yesterday also. Among them, Realty index underperformed & closed with a huge loss of 5.06%. On the other hand, IT index outperformed and settled in green.

GENERAL TREND

| HOURLY | DAILY | WEEKLY |
|-------------|-------------|-------------|
| DOWN | DOWN | DOWN |

DEMAND AND SUPPLY LEVELS

| INDEX | CLOSE | DEMAND LEVELS | SUPPLY LEVELS |
|-------------------|--------------|---------------------|---------------------|
| NIFTY 50 | 9820 | 9800, 9775 | 9875, 9890 |
| NIFTY BANK | 24217 | 24185, 24080 | 24325, 24375 |

SECTOR INDICES PERFORMANCE

| INDEX | CLOSE | % CHANGE |
|-------------------|-----------|----------|
| NIFTY REALTY | 257.30 | -5.07 |
| NIFTY MEDIA | 2,910.25 | -3.45 |
| NIFTY AUTO | 10,606.50 | -2.92 |
| NIFTY PHARMA | 8,513.20 | -2.89 |
| NIFTY PSU BANK | 3,461.35 | -2.65 |
| NIFTY CPSE | 2,382.60 | -2.63 |
| NIFTY COMMODITIES | 3,678.55 | -1.64 |
| NIFTY METAL | 3,328.65 | -1.62 |
| NIFTY ENERGY | 12,804.95 | -1.57 |
| NIFTY INFRA | 3,290.15 | -1.37 |
| NIFTY CONSUMPTION | 4,432.35 | -1.05 |
| NIFTY FIN SERVICE | 9,923.15 | -0.99 |
| NIFTY SERV SECTOR | 12,965.85 | -0.68 |
| NIFTY BANK | 24,217.35 | -0.65 |
| NIFTY FMCG | 24,969.25 | -0.53 |
| NIFTY PVT BANK | 13,436.30 | -0.47 |
| NIFTY IT | 10,662.35 | 0.46 |

COMMODITY

Except Copper, all other base metals traded range bound with positive bias yesterday. Precious metals witnessed rally for second successive day and closed at monthly high.

Crude prices witnessed a down ward move yesterday and closed at 2 weeks low.

DISCLAIMER: This Document has been prepared by Baljit Securities Pvt Ltd. (Baljit Securities). The information and opinions contained herein have been compiled or arrived at, based upon information obtained from reliable sources. Such information has not been independently verified and no guaranty, representation of warranty, express or implied, is made as to its accuracy, completeness or correctness. All such information and opinions are subject to change without notice. Baljit Securities, its directors, analysts or employees do not take any responsibility, financial or otherwise, of the losses or the damages sustained due to the investments made or any action taken on basis of this report. Baljit Securities expressly disclaims any and all liabilities that may arise from information, errors or omissions in this connection. This document is not to be considered as an offer to sell or a solicitation to buy any securities. Baljit Securities and its directors, associates, employees may or may not have any positions in any of the stocks dealt in the report. This report is only for **PRIVATE CIRCULATION**.

Trend Help Desk

Contact : 033 – 40511113 / 114
Email : trend@baljitgroup.com

