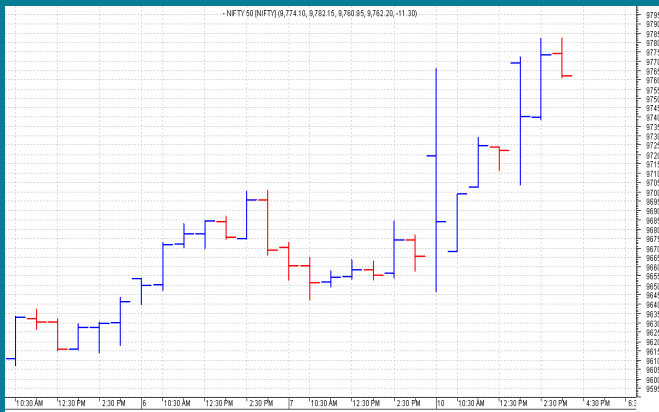


NIFTY: 9771 (+105)

NEW HIGH



SGX NIFTY: 9800 (+27)

MARKET COMMENTRY

In a decisive up move, Nifty not only crossed the level of 9700, it closed well above it. First half of the session was interrupted due to technical problem in NSE. However, sustained rise during second half pulled Nifty to new life time high of 9782 and finally closing at highest of the day.

Needless to say, all sector and thematic indices close in green. PSU Bank and Pharma indices witnessed decent gains. On the other hand, FMCG closed in flat.

GENERAL TREND

HOURLY	DAILY	WEEKLY
UP	UP	UP

DEMAND AND SUPPLY LEVELS

INDEX	CLOSE	DEMAND LEVELS	SUPPLY LEVELS
NIFTY 50	9771	9725, 9700	-----
NIFTY BANK	23675	23600, 23500	23965

SECTOR INDICES PERFORMANCE

INDEX	CLOSE	% CHANGE
NIFTY PSU BANK	3,479.35	2.92
NIFTY IT	10,337.00	2.47
NIFTY PHARMA	9,904.35	1.86
NIFTY CPSE	2,409.95	1.66
NIFTY REALTY	283.75	1.54
NIFTY INFRA	3,288.30	1.47
NIFTY METAL	3,127.00	1.27
NIFTY SERV SECTOR	12,593.85	1.27
NIFTY COMMODITIES	3,542.15	0.97
NIFTY BANK	23,674.40	0.96
NIFTY ENERGY	12,152.00	0.80
NIFTY PVT BANK	13,193.15	0.74
NIFTY FIN SERVICE	9,633.25	0.71
NIFTY CONSUMPTION	4,439.20	0.53
NIFTY AUTO	10,783.00	0.50
NIFTY MEDIA	3,051.05	0.44
NIFTY FMCG	27,447.15	-0.07

COMMODITY

Base metals prices remain under pressure. All of them either closed in red or settled flat. On the other hand Gold and Silver recovered from new lows and settled in green.

Crude prices also remain under pressure but settled flat.

DISCLAIMER: This Document has been prepared by Baljit Securities Pvt Ltd. (Baljit Securities). The information and opinions contained herein have been compiled or arrived at, based upon information obtained from reliable sources. Such information has not been independently verified and no guaranty, representation of warranty, express or implied, is made as to its accuracy, completeness or correctness. All such information and opinions are subject to change without notice. Baljit Securities, its directors, analysts or employees do not take any responsibility, financial or otherwise, of the losses or the damages sustained due to the investments made or any action taken on basis of this report. Baljit Securities expressly disclaims any and all liabilities that may arise from information, errors or omissions in this connection. This document is not to be considered as an offer to sell or a solicitation to buy any securities. Baljit Securities and its directors, associates, employees may or may not have any positions in any of the stocks dealt in the report. This report is only for **PRIVATE CIRCULATION**.

Trend Help Desk

Contact : 033 – 40511113 / 114
Email : trend@baljitgroup.com

