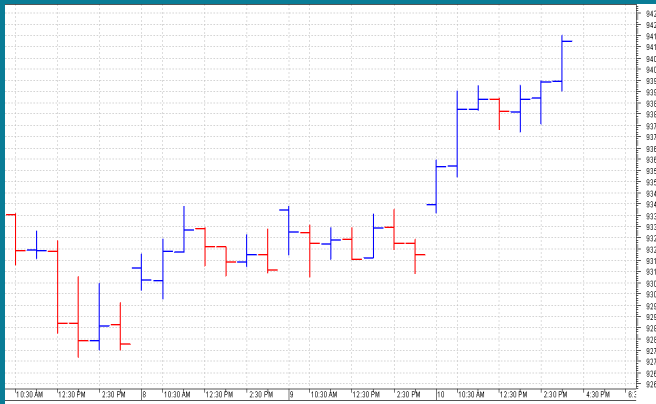


**NIFTY: 9407 (+90)****NEW LIFE TIME HIGH****SGX NIFTY: 9448 (+30)****MARKET COMMENTRY**

Bulls came back strongly yesterday and pulled up Nifty to new life time high of 9414. It was a gap up opening followed by a sideways trade in green during the day and then the last hour rally which made it close above 9400 mark.

Most of sector and thematic indices closed in green yesterday also. Consumption, Media and FMCG were the top performers and closed 2.27%, 2.25% and 1.81% higher. However, PSU Bank and IT sectors under performed and closed in red.

**GENERAL TREND**

HOURLY	DAILY	WEEKLY
UP	UP	UP

**DEMAND AND SUPPLY LEVELS**

INDEX	CLOSE	DEMAND LEVELS	SUPPLY LEVELS
NIFTY 50	9407	9395, 9375	-----
NIFTY BANK	22830	22780, 22740	-----

### SECTOR INDICES PERFORMANCE

INDEX	CLOSE	% CHANGE
NIFTY CONSUMPTION	4,200.45	2.27
NIFTY MEDIA	3,170.15	2.25
NIFTY FMCG	23,954.35	1.81
NIFTY AUTO	10,303.90	1.44
NIFTY FIN SERVICE	9,280.30	1.25
NIFTY INFRA	3,296.40	1.18
NIFTY ENERGY	12,118.45	1.15
NIFTY PHARMA	10,106.20	1.09
NIFTY SERV SECTOR	12,258.00	0.88
NIFTY METAL	2,899.10	0.79
NIFTY PVT BANK	12,624.60	0.68
NIFTY COMMODITIES	3,559.10	0.59
NIFTY BANK	22,830.35	0.54
NIFTY CPSE	2,733.10	0.15
NIFTY REALTY	267.15	0.11
NIFTY IT	10,219.55	-0.58
NIFTY PSU BANK	3,711.65	-0.81

### COMMODITY MARKET

All base metals settled flat yesterday. Gold and Silver also settled flat.

Crude prices witnessed buying yesterday and light crude settled with a gain of \$1.45.

**DISCLAIMER:** This Document has been prepared by Baljit Securities Pvt Ltd. (Baljit Securities). The information and opinions contained herein have been compiled or arrived at, based upon information obtained from reliable sources. Such information has not been independently verified and no guaranty, representation of warranty, express or implied, is made as to its accuracy, completeness or correctness. All such information and opinions are subject to change without notice. Baljit Securities, its directors, analysts or employees do not take any responsibility, financial or otherwise, of the losses or the damages sustained due to the investments made or any action taken on basis of this report. Baljit Securities expressly disclaims any and all liabilities that may arise from information, errors or omissions in this connection. This document is not to be considered as an offer to sell or a solicitation to buy any securities. Baljit Securities and its directors, associates, employees may or may not have any positions in any of the stocks dealt in the report. This report is only for **PRIVATE CIRCULATION**.

#### Trend Help Desk

Contact : 033 – 40511113 / 114  
Email : trend@baljitgroup.com

