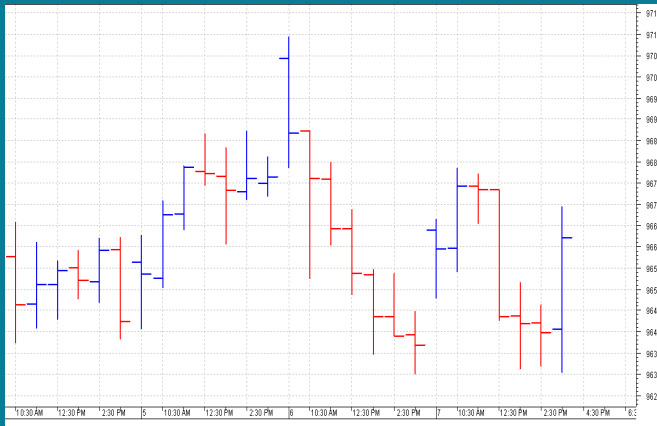


NIFTY: 9664 (+26)
RANGE BOUND AT NEW HIGH

SGX NIFTY: 9692 (-4)
MARKET COMMENTRY

Nifty traded range bound yesterday and closed with a gain of 26 points. It moved between 9678 and 9630 and settled at 9664.

Sector and thematic indices traded mixed yesterday. Few closed in green, few in red and few settled flat.

With a fall of 1.89%, IT index was the worst hit. On the other hand, with the gains of 1.37% and 1.24%, Pharma and PSU Bank indices out performed.

GENERAL TREND

HOURLY	DAILY	WEEKLY
UP	UP	UP

DEMAND AND SUPPLY LEVELS

INDEX	CLOSE	DEMAND LEVELS	SUPPLY LEVELS
NIFTY 50	9664	9630, 9605	9680, 9710
NIFTY BANK	23567	23485, 23425	-----

SECTOR INDICES PERFORMANCE

INDEX	CLOSE	% CHANGE
NIFTY PHARMA	9,300.55	1.37
NIFTY PSU BANK	3,548.65	1.24
NIFTY METAL	2,924.85	0.98
NIFTY ENERGY	11,788.90	0.96
NIFTY CONSUMPTION	4,386.40	0.84
NIFTY AUTO	10,932.40	0.77
NIFTY PVT BANK	13,120.05	0.67
NIFTY FMCG	26,230.20	0.66
NIFTY BANK	23,567.65	0.65
NIFTY COMMODITIES	3,472.45	0.51
NIFTY CPSE	2,536.80	0.49
NIFTY FIN SERVICE	9,559.20	0.42
NIFTY INFRA	3,241.30	0.41
NIFTY MEDIA	3,090.55	0.38
NIFTY REALTY	252.75	0.12
NIFTY SERV SECTOR	12,595.25	-0.16
NIFTY IT	10,701.25	-1.89

COMMODITY MARKET

Base metals prices remained under pressure. Rally in precious metals also took a pause yesterday.

Crude prices witnesses strong selling yesterday and Light crude closed at \$54.72 with a huge loss of \$2.47.

DISCLAIMER: This Document has been prepared by Baljit Securities Pvt Ltd. (Baljit Securities). The information and opinions contained herein have been compiled or arrived at, based upon information obtained from reliable sources. Such information has not been independently verified and no guaranty, representation of warranty, express or implied, is made as to its accuracy, completeness or correctness. All such information and opinions are subject to change without notice. Baljit Securities, its directors, analysts or employees do not take any responsibility, financial or otherwise, of the losses or the damages sustained due to the investments made or any action taken on basis of this report. Baljit Securities expressly disclaims any and all liabilities that may arise from information, errors or omissions in this connection. This document is not to be considered as an offer to sell or a solicitation to buy any securities. Baljit Securities and its directors, associates, employees may or may not have any positions in any of the stocks dealt in the report. This report is only for **PRIVATE CIRCULATION**.

Trend Help Desk

Contact : 033 – 40511113 / 114
Email : trend@baljitgroup.com

