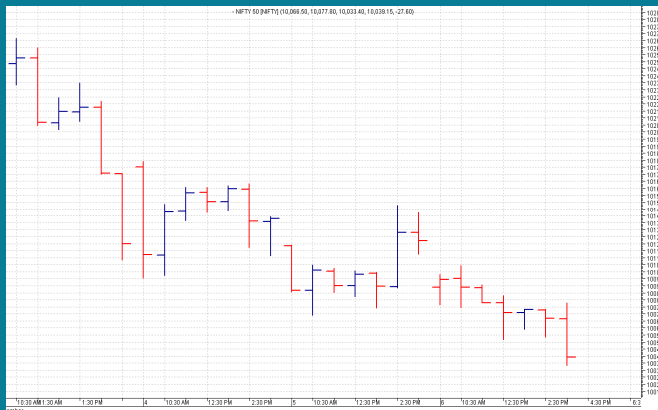


NIFTY: 10044 (-74)**DOWNWARD MOVE****SGX NIFTY: 10079 (+7)****MARKET COMMENTRY**

Nifty moved downward yesterday and closed with a loss of 74 points. It was a gap down opening and a close at low of the day. With yesterday's move, Nifty has fallen 376 points within 6 trading sessions.

Except Energy and IT, all other sector and thematic indices closed in red yesterday. Among them, PSU Bank index was the worst hit with a loss of 2.1% and was closely followed by Metal index with 1.95% lower close.

GENERAL TREND

HOURLY	DAILY	WEEKLY
DOWN	DOWN	DOWN

DEMAND AND SUPPLY LEVELS

INDEX	CLOSE	DEMAND LEVELS	SUPPLY LEVELS
NIFTY 50	10044	10000, 9970	10080, 10104
NIFTY BANK	24852	24800, 24740	24980, 25060

SECTOR INDICES PERFORMANCE

INDEX	CLOSE	% CHANGE
NIFTY PSU BANK	3,751.75	-2.10
NIFTY METAL	3,530.75	-1.95
NIFTY FIN SERVICE	10,119.25	-1.29
NIFTY INFRA	3,415.45	-1.19
NIFTY PHARMA	8,938.20	-1.16
NIFTY BANK	24,851.80	-1.09
NIFTY COMMODITIES	3,822.90	-1.05
NIFTY PVT BANK	13,698.90	-0.90
NIFTY SERV SECTOR	13,237.90	-0.86
NIFTY CPSE	2,557.10	-0.81
NIFTY AUTO	11,020.75	-0.72
NIFTY MEDIA	3,278.35	-0.41
NIFTY CONSUMPTION	4,754.35	-0.38
NIFTY REALTY	315.15	-0.33
NIFTY FMCG	25,622.15	-0.29
NIFTY ENERGY	13,965.05	0.16
NIFTY IT	11,074.90	0.45

COMMODITY

Except Lead, all other base metal prices remain under pressure yesterday also.

Precious metals continue to witness selling and settled in red.

Crude prices also witnessed selling yesterday and prices settled in deep red.

DISCLAIMER: This Document has been prepared by Baljit Securities Pvt Ltd. (Baljit Securities). The information and opinions contained herein have been compiled or arrived at, based upon information obtained from reliable sources. Such information has not been independently verified and no guaranty, representation of warranty, express or implied, is made as to its accuracy, completeness or correctness. All such information and opinions are subject to change without notice. Baljit Securities, its directors, analysts or employees do not take any responsibility, financial or otherwise, of the losses or the damages sustained due to the investments made or any action taken on basis of this report. Baljit Securities expressly disclaims any and all liabilities that may arise from information, errors or omissions in this connection. This document is not to be considered as an offer to sell or a solicitation to buy any securities. Baljit Securities and its directors, associates, employees may or may not have any positions in any of the stocks dealt in the report. This report is only for **PRIVATE CIRCULATION**.

Trend Help Desk

Contact : 033 – 40511113 / 114
Email : trend@baljitgroup.com

