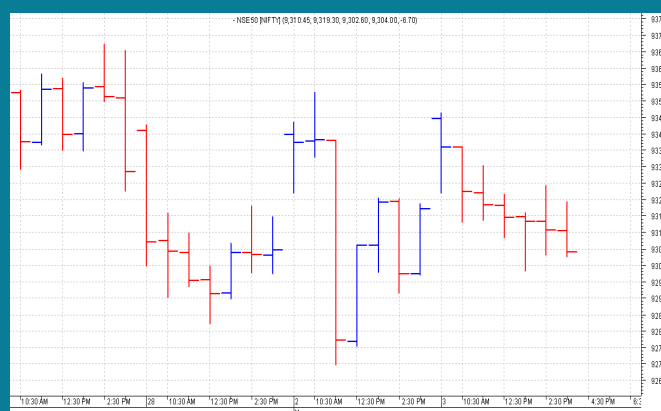


**NIFTY: 9312 (-2)****RANGE BOUND AT NEW HIGH****SGX NIFTY: 9337 (-3)****MARKET COMMENTRY**

Nifty traded range bound yesterday also and settled flat. It made a high of 9346, low of 9298 and closed at 9312.

Sector and thematic indices traded mixed yesterday also. Few closed in green, few in red and few settled flat.

Realty index, with a gain of 1.55% remains the best performer. It was followed by IT index with 1.25% and PSU Bank index with a percent gain. On the other hand, Media, Pharma and Private Bank indices underperformed and closed in red.

**GENERAL TREND**

HOURLY	DAILY	WEEKLY
SIDEWAYS	SIDEWAYS	UP

**DEMAND AND SUPPLY LEVELS**

INDEX	CLOSE	DEMAND LEVELS	SUPPLY LEVELS
NIFTY 50	9312	9282, 9270	9325, 9345
NIFTY BANK	22307	22240, 22180	22380, 22490

### SECTOR INDICES PERFORMANCE

INDEX	CLOSE	% CHANGE
NIFTY REALTY	259.60	1.55
NIFTY IT	10,131.05	1.25
NIFTY PSU BANK	3,691.35	1.01
NIFTY SERV SECTOR	12,062.25	0.10
NIFTY COMMODITIES	3,567.35	-0.08
NIFTY CONSUMPTION	4,118.60	-0.14
NIFTY BANK	22,307.30	-0.15
NIFTY AUTO	10,273.00	-0.21
NIFTY METAL	2,950.85	-0.22
NIFTY ENERGY	12,212.85	-0.25
NIFTY INFRA	3,223.20	-0.25
NIFTY FMCG	23,683.80	-0.30
NIFTY FIN SERVICE	9,088.05	-0.33
NIFTY PVT BANK	12,262.00	-0.36
NIFTY CPSE	2,733.85	-0.46
NIFTY PHARMA	9,981.80	-0.54
NIFTY MEDIA	3,219.65	-1.60

### COMMODITY MARKET

Except Aluminum, all other base metals witnessed selling yesterday and closed in red. Prices of Gold and Silver remains under pressure yesterday also and Silver felt down to 11 months low of 38108.

Crude remains under pressure. Light crude closed flat at \$47.82 yesterday.

**DISCLAIMER:** This Document has been prepared by Baljit Securities Pvt Ltd. (Baljit Securities). The information and opinions contained herein have been compiled or arrived at, based upon information obtained from reliable sources. Such information has not been independently verified and no guaranty, representation of warranty, express or implied, is made as to its accuracy, completeness or correctness. All such information and opinions are subject to change without notice. Baljit Securities, its directors, analysts or employees do not take any responsibility, financial or otherwise, of the losses or the damages sustained due to the investments made or any action taken on basis of this report. Baljit Securities expressly disclaims any and all liabilities that may arise from information, errors or omissions in this connection. This document is not to be considered as an offer to sell or a solicitation to buy any securities. Baljit Securities and its directors, associates, employees may or may not have any positions in any of the stocks dealt in the report. This report is only for **PRIVATE CIRCULATION**.

#### Trend Help Desk

Contact : 033 – 40511113 / 114  
Email : trend@baljitgroup.com

