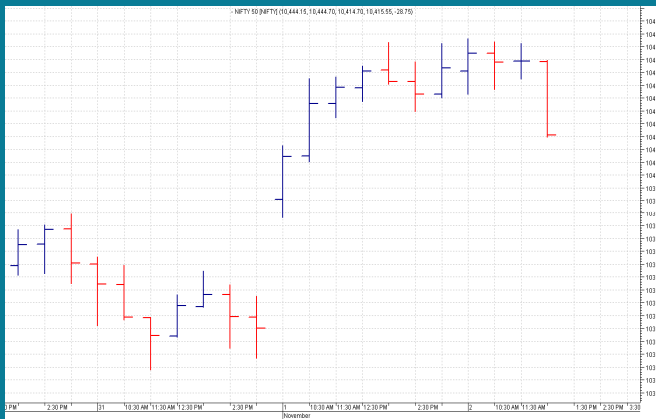


NIFTY: 10424 (-16)
RANGE BOUND AT NEW HIGH

SGX NIFTY: 10461 (+6)
MARKET COMMENTRY

Market took a pause yesterday and Nifty traded range bound. It made a high of 10453 and a low of 10412 before settling at 10424.

In tandem with broad indices, sector and thematic indices also traded range bound and settled flat. However, among them, Pharma index outperformed with 3% rise and PSU Bank index under performed with 1.52% loss. FMCG index also settled a percent lower.

GENERAL TREND

HOURLY	DAILY	WEEKLY
SIDEWAYS	UP	UP

DEMAND AND SUPPLY LEVELS

INDEX	CLOSE	DEMAND LEVELS	SUPPLY LEVELS
NIFTY 50	10424	10412, 10390	10440, 10453
NIFTY BANK	25427	25350, 25300	25500, 25600

SECTOR INDICES PERFORMANCE

INDEX	CLOSE	% CHANGE
NIFTY PHARMA	10,004.50	3.02
NIFTY FIN SERVICE	10,464.75	0.26
NIFTY IT	10,845.85	0.26
NIFTY CPSE	2,758.05	0.24
NIFTY INFRA	3,617.55	0.16
NIFTY SERV SECTOR	13,556.35	0.15
NIFTY REALTY	312.50	0.03
NIFTY PVT BANK	14,046.40	-0.04
NIFTY METAL	3,941.00	-0.14
NIFTY CONSUMPTION	4,747.15	-0.19
NIFTY ENERGY	14,549.60	-0.24
NIFTY BANK	25,427.30	-0.25
NIFTY COMMODITIES	4,111.55	-0.39
NIFTY MEDIA	3,119.40	-0.51
NIFTY AUTO	11,282.85	-0.71
NIFTY FMCG	25,823.90	-1.00
NIFTY PSU BANK	3,862.35	-1.52

COMMODITY

All base metals traded range bound with a negative bias yesterday.

Gold and Silver also traded range bound and settled flat.

Crude prices remain firm and settled in green.

DISCLAIMER: This Document has been prepared by Baljit Securities Pvt Ltd. (Baljit Securities). The information and opinions contained herein have been compiled or arrived at, based upon information obtained from reliable sources. Such information has not been independently verified and no guaranty, representation of warranty, express or implied, is made as to its accuracy, completeness or correctness. All such information and opinions are subject to change without notice. Baljit Securities, its directors, analysts or employees do not take any responsibility, financial or otherwise, of the losses or the damages sustained due to the investments made or any action taken on basis of this report. Baljit Securities expressly disclaims any and all liabilities that may arise from information, errors or omissions in this connection. This document is not to be considered as an offer to sell or a solicitation to buy any securities. Baljit Securities and its directors, associates, employees may or may not have any positions in any of the stocks dealt in the report. This report is only for **PRIVATE CIRCULATION**.

Trend Help Desk

Contact : 033 – 40511113 / 114
Email : trend@baljitgroup.com

