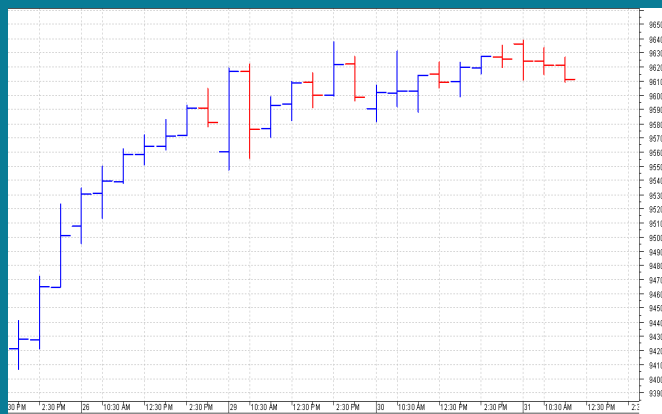


NIFTY: 9621 (-3)
RANGE BOUND AT NEW HIGH

SGX NIFTY: 9631 (-5)
MARKET COMMENTRY

Nifty traded extremely range bound yesterday and settled flat. It moved within a small range of 40 points between 9610 and 9650 and finally settled at 9621.

Sector and thematic indices traded mixed yesterday. Few closed in green, few in red and few settled flat.

Among gainers, Realty index outperformed with 1.13% rise. Among losers, Metal underperformed with 1.53% loss.

GENERAL TREND

HOURLY	DAILY	WEEKLY
SIDEWAYS	UP	UP

DEMAND AND SUPPLY LEVELS

INDEX	CLOSE	DEMAND LEVELS	SUPPLY LEVELS
NIFTY 50	9621	9610, 9590	9640, 9650
NIFTY BANK	23425	23350, 23280	-----

SECTOR INDICES PERFORMANCE

INDEX	CLOSE	% CHANGE
NIFTY REALTY	250.40	1.13
NIFTY AUTO	10,870.80	0.64
NIFTY PVT BANK	13,034.20	0.62
NIFTY CONSUMPTION	4,308.15	0.60
NIFTY BANK	23,424.80	0.50
NIFTY PHARMA	9,025.25	0.39
NIFTY FIN SERVICE	9,510.00	0.35
NIFTY FMCG	25,841.80	0.23
NIFTY SERV SECTOR	12,520.30	0.07
NIFTY INFRA	3,213.15	0.06
NIFTY PSU BANK	3,514.40	-0.18
NIFTY COMMODITIES	3,513.65	-0.20
NIFTY ENERGY	11,925.65	-0.24
NIFTY CPSE	2,575.10	-0.41
NIFTY MEDIA	3,066.05	-0.52
NIFTY IT	10,549.10	-0.56
NIFTY METAL	2,952.95	-1.53

COMMODITY MARKET

Base metals prices remain under pressure yesterday. On the other hand, precious metals traded with a positive bias.

Crude prices witnessed selling and Light crude and closed at \$48.32 with a loss of \$1.34.

DISCLAIMER: This Document has been prepared by Baljit Securities Pvt Ltd. (Baljit Securities). The information and opinions contained herein have been compiled or arrived at, based upon information obtained from reliable sources. Such information has not been independently verified and no guaranty, representation of warranty, express or implied, is made as to its accuracy, completeness or correctness. All such information and opinions are subject to change without notice. Baljit Securities, its directors, analysts or employees do not take any responsibility, financial or otherwise, of the losses or the damages sustained due to the investments made or any action taken on basis of this report. Baljit Securities expressly disclaims any and all liabilities that may arise from information, errors or omissions in this connection. This document is not to be considered as an offer to sell or a solicitation to buy any securities. Baljit Securities and its directors, associates, employees may or may not have any positions in any of the stocks dealt in the report. This report is only for **PRIVATE CIRCULATION**.

Trend Help Desk

Contact : 033 – 40511113 / 114
Email : trend@baljitgroup.com

